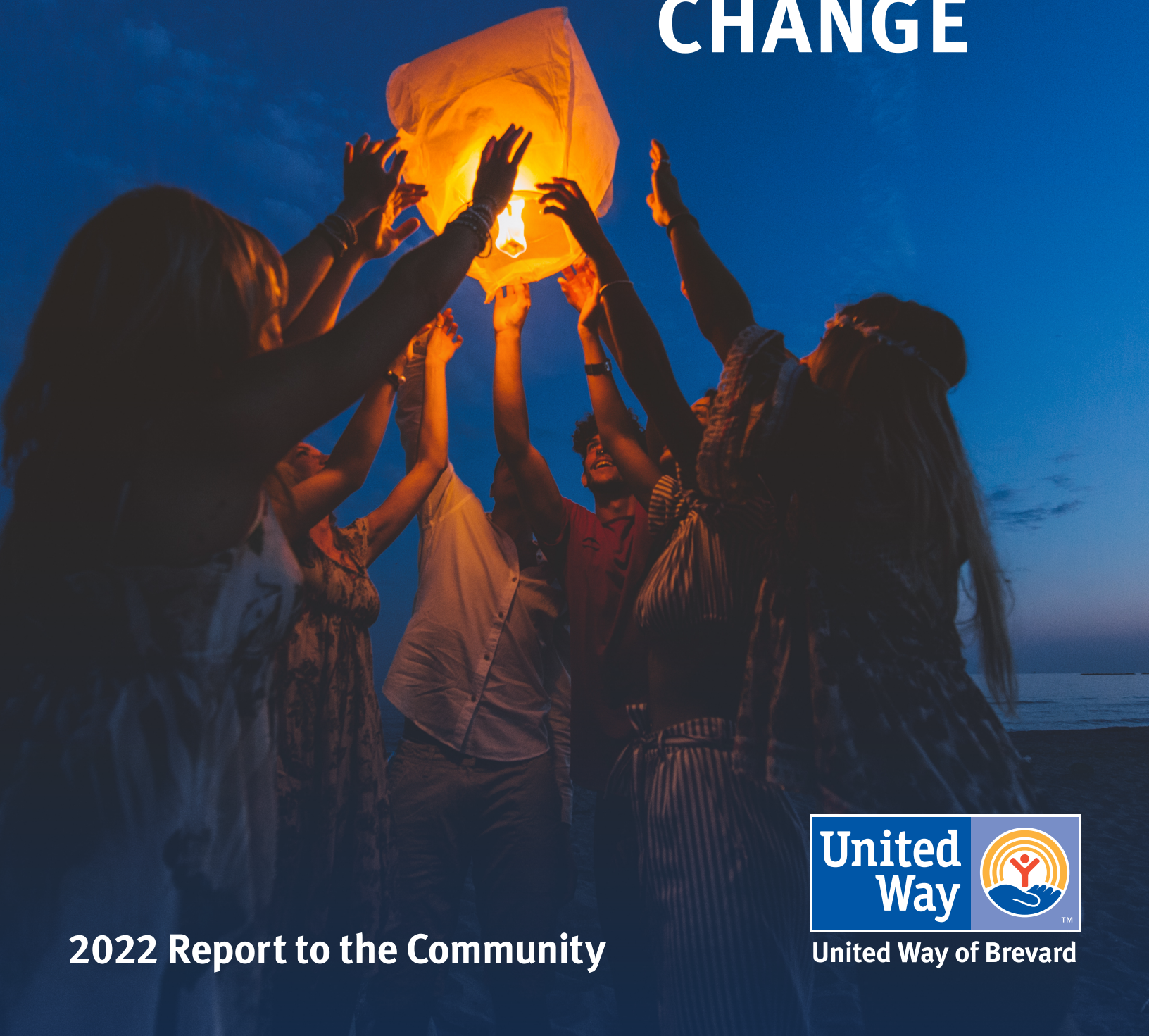


UNITED WE IGNITE CHANGE



2022 Report to the Community



United Way of Brevard

During 2021-2022

Community Participation

200
Workplaces

&

11,878
Donors



60

Local Philanthropists

gave at the prestigious Tocqueville Society level of \$10,000 or more.



1,919

Individuals

gave at the leadership level.



\$5,600,000
was donated, plus




\$851,712
Gifts In Kind

We distributed a record number of supplies to our community like diapers, toothbrushes, books and so much more.



5 Grants Add
\$1,966,427



512 Volunteers
Contributed More Than
5,979 HOURS
 **OF SERVICE**

United Way of Brevard Creates Leverage

through additional channels to augment
the 2021-2022 total revenue



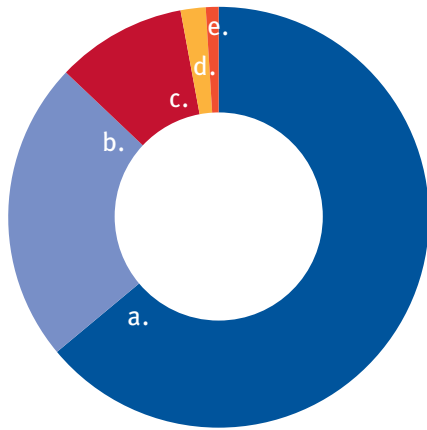
Every **ONE** dollar donated brings an
average of **THREE** matching dollars
into our community - that's a

\$16,000,000
IMPACT!



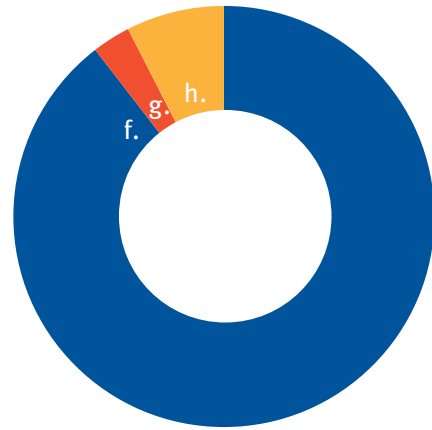
We Can Fight For So Much Because Of Your Generosity In Giving

2021 -2022 Financials



\$8,501,055

Total Revenue



\$8,246,253

Total Expenditures

a. Contributions	\$5,436,161
b. Grants	\$1,966,427
c. Gifts In Kind	\$ 851,712
d. Investment	\$ 163,508
e. Other	\$ 83,247

f. Program Expenditures	\$ 7,383,170
g. Management and General	\$ 242,348
h. Fundraising	\$ 620,735

Our current overhead is 10.2% based on the current 990. Visit uwbrevard.org for the full 990 and audit.

Top 25 Workplace Campaigns

- | | | |
|--|--|--|
| 1. L3Harris | 10. Ron Jon Surf Shop | 19. Brevard County Board of County Commissioners |
| 2. Publix Super Markets | 11. Jacobs | 20. Space Florida |
| 3. Space Coast Credit Union | 12. Raymond James & Associates, Inc. | 21. Collins Aerospace |
| 4. Brevard Public Schools | 13. Lockheed Martin | 22. IAP Ingenuity and Purpose |
| 5. Kennedy Space Center Visitor Complex | 14. ELVIS 3 | 23. Community Credit Union of Florida |
| 6. Health First | 15. City of Palm Bay | 24. MH Williams Construction Group, Inc. |
| 7. Florida Tech | 16. Southeast Petro Distributors, Inc. | 25. Carr, Riggs & Ingram |
| 8. United Launch Alliance | 17. City of Melbourne | |
| 9. Florida Power & Light Company IBEW Local 1908 | 18. United Parcel Service | |

When we unite, we ignite change.

United Way isn't just another nonprofit asking for your money. It's a powerful alliance of 44 local partner agencies working together to change lives and strengthen Brevard.

For 65 years, we've been helping to ensure a strong community that has babies who are born healthy; kids who can read proficiently by 3rd grade; teens graduating high school prepared for college, careers and life; children growing up in secure homes and safe neighborhoods, with access to healthy food; and families where people are educated, employed and housed.



Thank You To Our Partner Agencies

211 Brevard

Aging Matters in Brevard

American Red Cross

AMikids Space Coast

Big Brothers Big Sisters

Boy Scouts of Central Florida

Boys and Girls Clubs
of Central Florida

Brevard Achievement Center

Brevard Alzheimer's Foundation

Brevard County Legal Aid

Brevard Zoo

Bridges

Catholic Charities

Children's Advocacy Center

The Children's Center

Children's Home Society

Children's Hunger Project

Club Esteem

Computers Advancing Education

Crosswinds Youth Services

Early Learning Coalition

Girl Scouts of Citrus Council

Grandparents Raising
Grandchildren

Junior Achievement

Housing for Homeless

Links of Hope

Lifetime Counseling Center

My Community Cares

National Technical Association

National Veterans Homeless
Support

Neighbor Up Brevard

New Life Mission

North Brevard Charities
Sharing Center

Project Response

Rolling Readers Space Coast

The Salvation Army -
North/Central Brevard Corps

The Salvation Army -
Domestic Violence Shelter

The Salvation Army -
South Brevard Corps

Second Harvest Food Bank -
Brevard Chapter

Serene Harbor

Sharing Center of Central Brevard

Space Coast Discovery

STEPS -
Specialized Treatment,
Education and Prevention
Services

The Women's Center